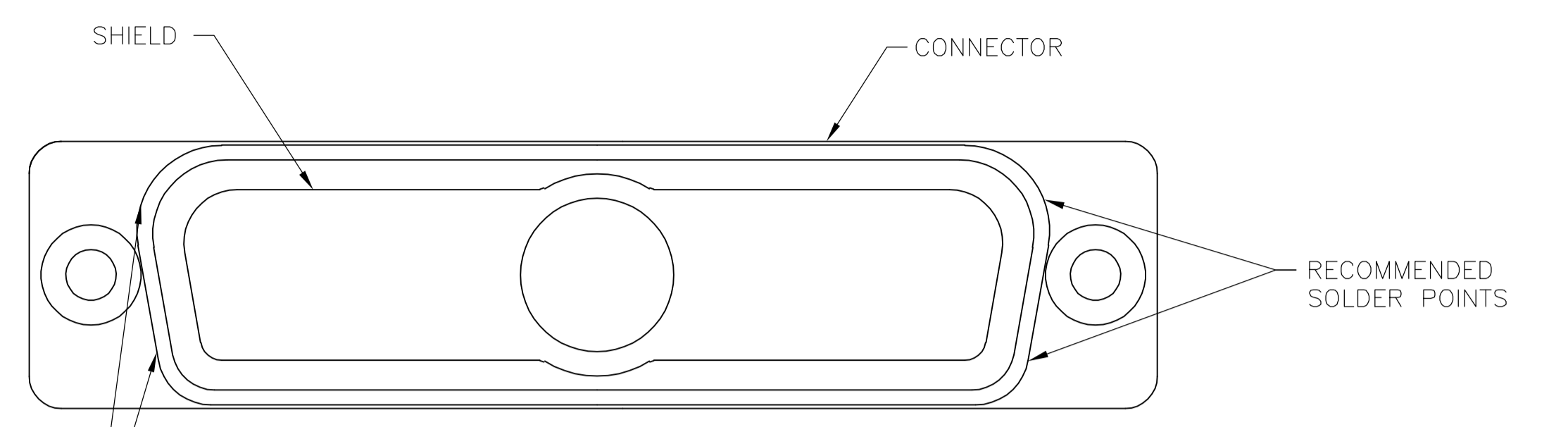
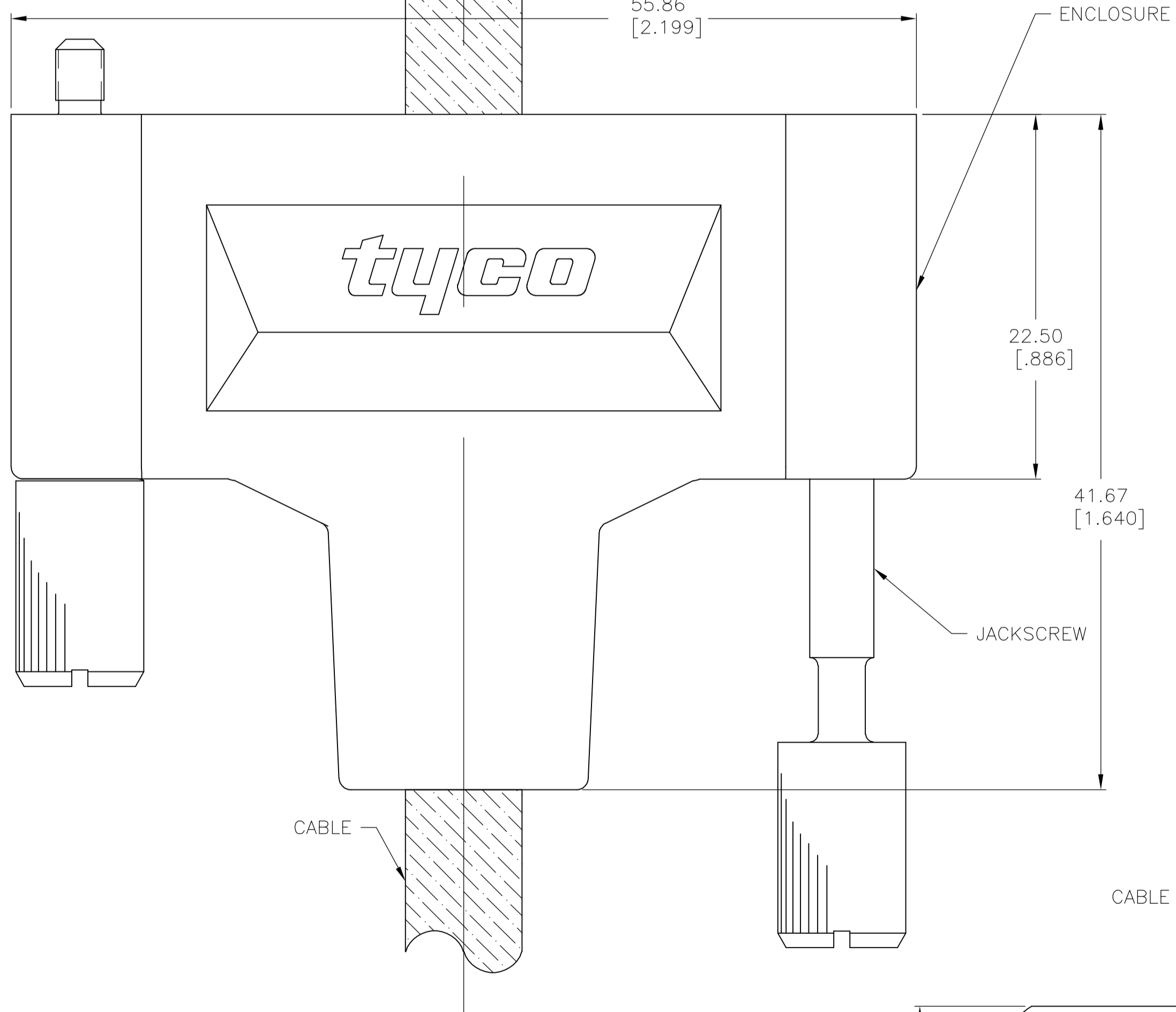
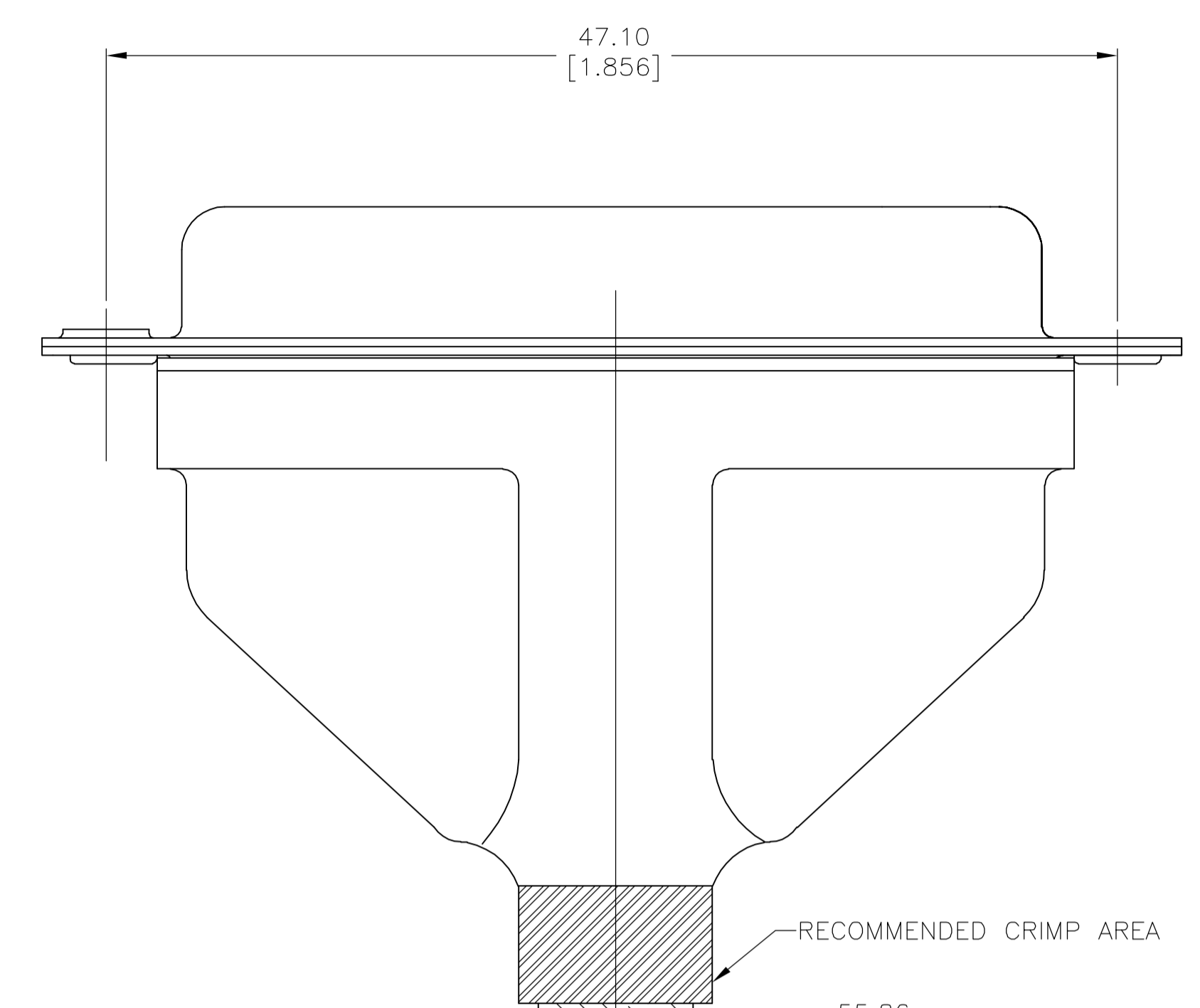


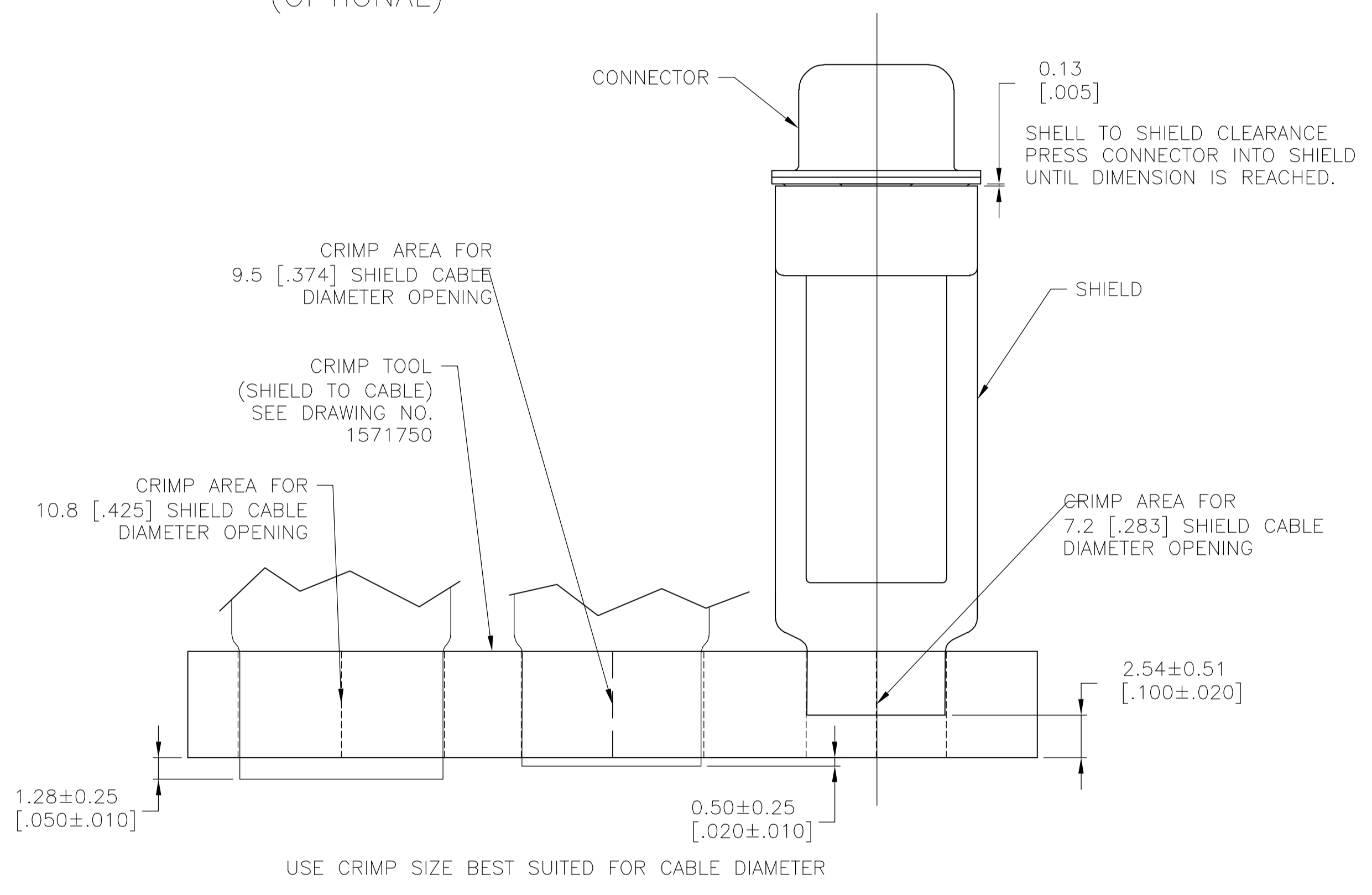
NON-ROHS COMPLIANT VERSION

LOC	DIST	REVISIONS			
AD	00	REV	DESCRIPTION	DATE	BY
		D2	ECO-07-03605	15FEB07	MB JO

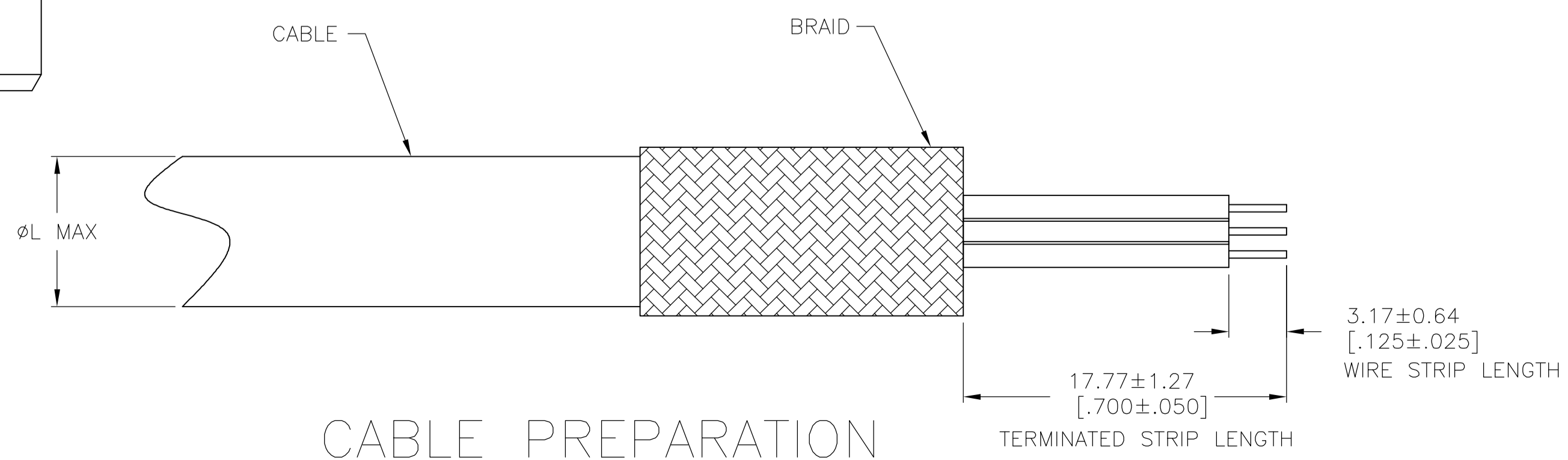
- NOTES :
- MATERIAL**  
INSERT: PBT, BLACK, UL94V-0 RATED  
CONTACT & JACKSCREWS: BRASS  
SHELLS & SHIELD: STEEL  
ENCLOSURE: PVC, BLACK
  - FINISH**  
CONTACT: GOLD PLATING 0.02µm[.0000008] MIN ON CONTACT AREA 2.3µm[.000090] MIN TIN-LEAD PLATING ON SOLDER AREA. ALL OVER 1.27µm[.000050] MIN NICKEL.  
SHELL: 2.4µm[.000095] MIN TIN  
SHIELD: 2.0-3.0µm[.000080-.000120] TIN
  - SPECIFICATION**  
ELECTRICAL CHARACTERISTICS:  
CURRENT RATING: 3 AMPERES  
DIELECTRIC WITHSTANDING VOLTAGE: AC 1000V r.m.s  
INSULATION RESISTANCE: 5000 MEGOHMS MINIMUM AT DC 500V  
CONTACT RESISTANCE: 10 MILLIOHMS MAXIMUM.
  - RECEPTACLE CONNECTOR FULLY LOADED WITH CONTACTS. ALL OTHER PARTS ARE SHIPPED UNASSEMBLED, EACH PART INDIVIDUALLY BULK PACKED.
  - SOLDER CUP WILL ACCOMMODATE 20 MAX AWG WIRE.
  - FINISH**  
CONTACT: GOLD PLATING 0.02µm[.0000008] MIN ON CONTACT AREA 2.3µm[.000090] MIN TIN PLATING ON SOLDER AREA. ALL OVER 1.27µm[.000050] MIN NICKEL.  
SHELL: 2.4µm[.000095] MIN TIN  
SHIELD: 2.0-3.0µm[.000080-.000120] TIN
  - ROHS 2002/95/EC COMPLIANT PART. (SEE SHEET 2).



SOLDER LOCATION (OPTIONAL)



SHIELD TO CABLE CRIMP



CABLE PREPARATION

ASSEMBLY INSTRUCTIONS

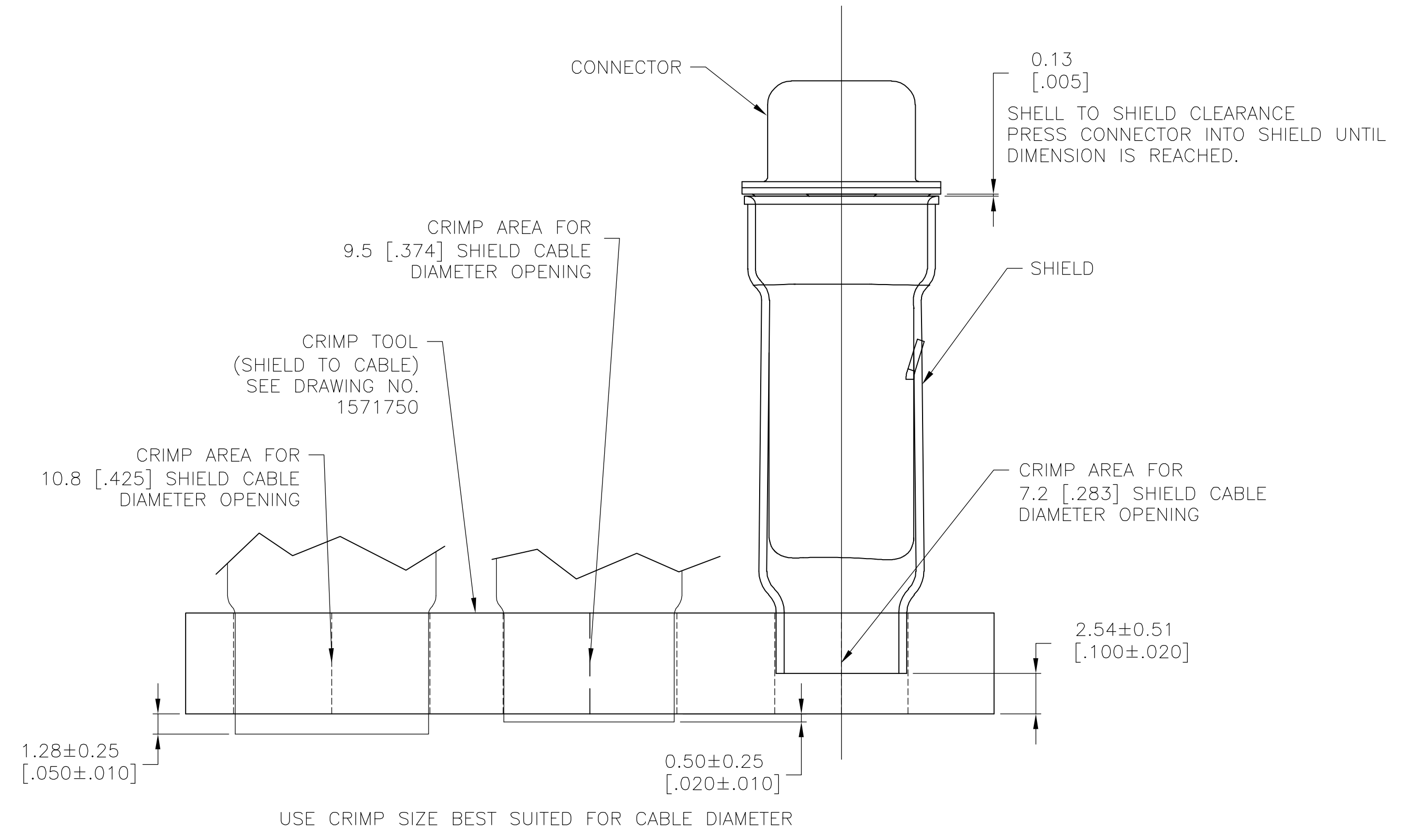
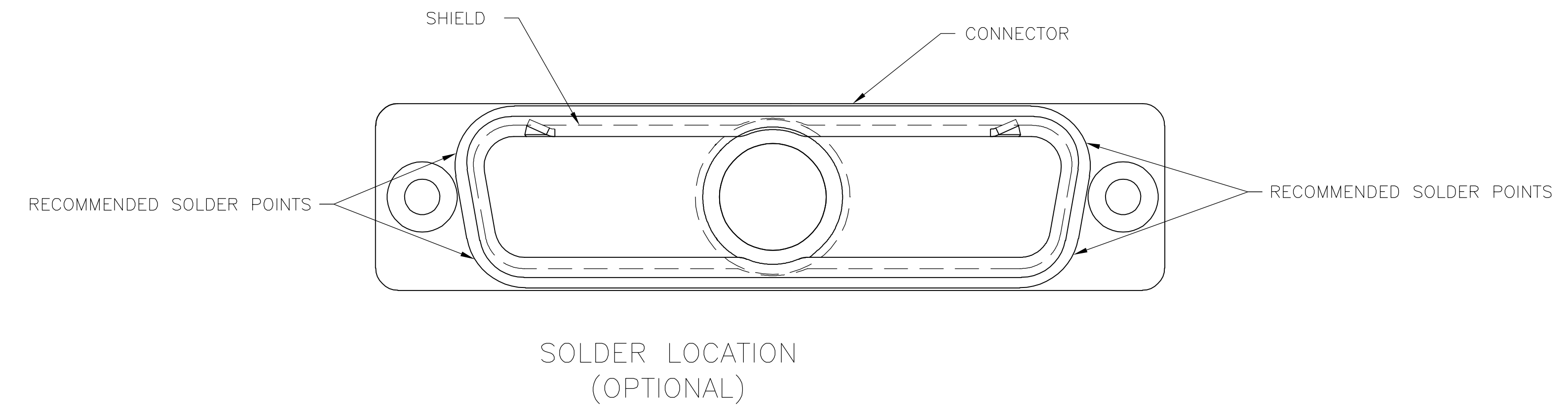
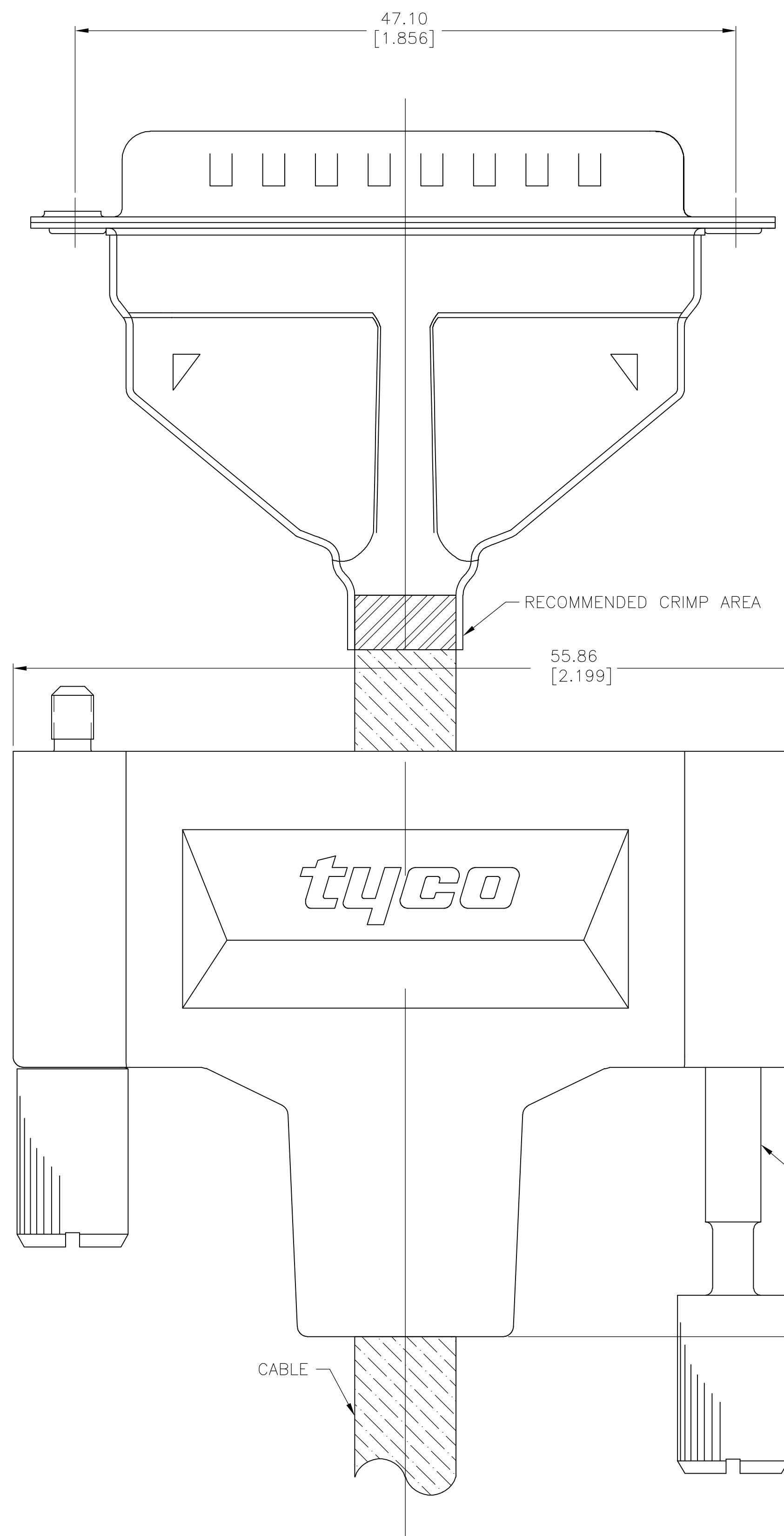
- USE SHIELD ENCLOSURE EXPANSION TOOL, 58241-1 TO GET ENCLOSURE ON CABLE.
- PREPARE CABLE AS SHOWN.
- PLACE CABLE THROUGH SHIELD.
- SOLDER CONDUCTORS TO CONTACTS.
- PRESS SHIELD ONTO CONNECTOR AS SHOWN.
- SOLDER SHIELD TO CONNECTOR AS SHOWN (OPTIONAL).
- METALLIC SHIELD SURFACES AND INTERIOR ENCLOSURE SURFACE MUST BE CLEAN AND DRY PER 3M REQUIREMENTS.
- CUT TWO PIECES OF 3M/SCOTCH VHB 4926, DOUBLE COATED ADHESIVE TAPE 6 TO 8mm WIDE BY 31 TO 35mm LONG.
- APPLY TAPE TO METALLIC SHIELD SURFACE. LENGTHWISE. ADJACENT TO CONNECTOR FLANGE.
- REMOVE ADHESIVE BACKING FROM TAPE AND PUSH ENCLOSURE OVER METALLIC SHIELD.
- BOND STRENGTH IS DEPENDANT ON THE AMOUNT OF SURFACE CONTACT DEVELOPED. A FIRM APPLICATION DEVELOPS A BETTER BOND. ULTIMATE SURFACE CONTACT CAN BE ACCOMPLISHED BY CLAMPING ENCLOSURE TO THE SHIELD. CARE SHOULD BE TAKEN NOT TO MAR THE POLYMER SURFACE. SHIMS MAY BE REQUIRED TO EVENLY DISTRIBUTE THE CLAMPING FORCE ACROSS THE POLYMER.
- ULTIMATE BOND STRENGTH IS DEVELOPED AFTER 72 HOURS, BUT MAY BE ACCELERATED BY EXPOSURE TO 66°C FOR 1 HOUR, IF THE CLAMPS ARE COMPATIBLE WITH THIS TEMPERATURE.
- INSERT JACK SCREWS.

8	6	10.8 [.425]	1571656-6
8	6	9.5 [.374]	1571656-5
8	6	7.2 [.283]	1571656-4
SUPERSEDED BY 1571656-6	2	10.8 [.425]	1571656-3
SUPERSEDED BY 1571656-5	2	9.5 [.374]	1571656-2
SUPERSEDED BY 1571656-4	2	7.2 [.283]	1571656-1
	FINISH	CABLE DIA L	PART NUMBER

EXPLODED VIEW OF ASSEMBLED KIT

DIMENSIONS:		TOLERANCES UNLESS OTHERWISE SPECIFIED:		MATERIAL		FINISH	
0 PLC	±	±	±	1	2	6	
1 PLC	±	±	±				
2 PLC	±	±	±				
3 PLC	±	±	±				
4 PLC	±	±	±				
ANGLES	±	±	±				

THIS DRAWING IS A CONTROLLED DOCUMENT.	DIN M. BINNER 21NOV03	<b>tyco</b> Electronics	Tyco Electronics Corporation Harrisburg, Pa 17105-3608
PRODUCT SPEC	108-40031	BULK KIT, RECEPTACLE, AMPLIMITE SOLDER CUP SHIELDING ENCLOSURE 25 POSITION, SIZE 3	
APPLICATION SPEC		SIZE	CAGE CODE DRAWING NO
WEIGHT		A1	00779 ©=1571656
CUSTOMER DRAWING	SCALE 4:1	SHEET 1 OF 2	REV D2

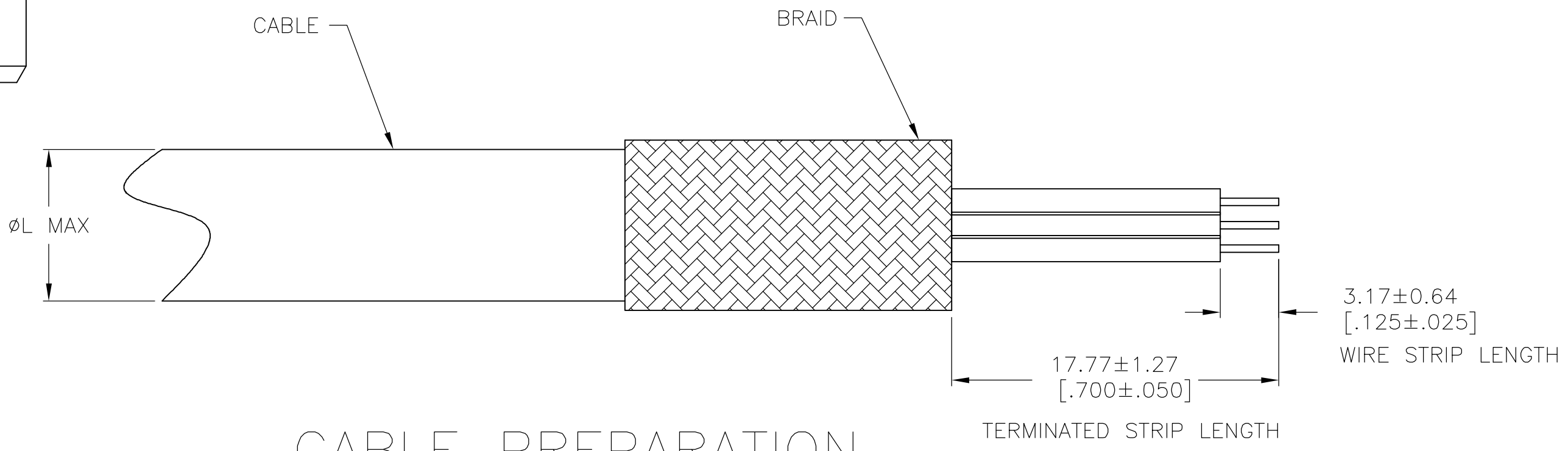


**ASSEMBLY INSTRUCTIONS**

- USE SHIELD ENCLOSURE EXPANSION TOOL, 58241-1 TO GET ENCLOSURE ON CABLE.
- PREPARE CABLE AS SHOWN.
- PLACE CABLE THROUGH SHIELD.
- SOLDER CONDUCTORS TO CONTACTS.
- PRESS SHIELD ONTO CONNECTOR AS SHOWN.
- SOLDER SHIELD TO CONNECTOR AS SHOWN (OPTIONAL).
- CRIMP SHIELD TO CABLE AS SHOWN IN CRIMP DETAIL.
- PRESS ENCLOSURE OVER SHIELD UNTIL CONNECTOR FLANGE IS FLUSH WITH ENCLOSURE EDGE.
- INSERT JACKSCREWS.

EXPLODED VIEW OF ASSEMBLED KIT

CABLE PREPARATION



THIS DRAWING IS A CONTROLLED DOCUMENT.		DWN	M. BINNER	21NOV03	<b>tyco</b> Electronics	Tyco Electronics Corporation Harrisburg, Pa 17105-3608	
DIMENSIONS: mm [INCHES]		CHK				NAME	BULK KIT, RECEPTACLE, AMPLIMITE SOLDER CUP SHIELDING ENCLOSURE 25 POSITION, SIZE 3
TOLERANCES UNLESS OTHERWISE SPECIFIED:		APPV			PRODUCT SPEC	108-40031	
0 PLC ± -				APPLICATION SPEC			
1 PLC ± 0.3[.012]				SIZE		A1	
2 PLC ± -				CAGE CODE		1571656	
3 PLC ± -				DRAWING NO		1571656	
4 PLC ± -				RESTRICTED TO			
ANGLES ± -				WEIGHT			
FINISH ± -				CUSTOMER DRAWING			